

L3X62

Rev 00

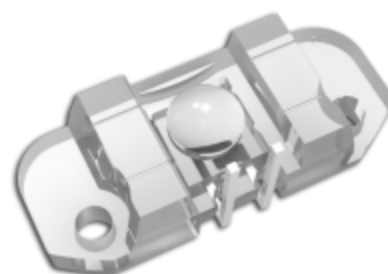
Features

- 1、Integrated Light Source with Bracket
- 2、Fixed Code Wheel Placed on Bracket
- 3、650nm Wavelength
- 4、Broad Beam
- 5、Light Homogeneity
- 6、-40°C—+85°C Operating Temperature

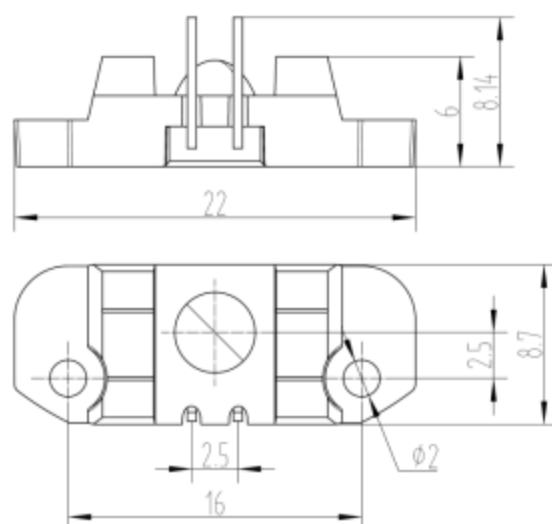
Application

- Applied to Photodetector 1005、1011、1014
- Used with Absolute Encoder
- Applied to Position-sensing Photosensitive Light Sources

Encapsulation Mode



Main dimensions (mm)



Absolute Rating

Damage may occur if the operating environment is exceeded in the table below (Note: Test condition is 25°C)

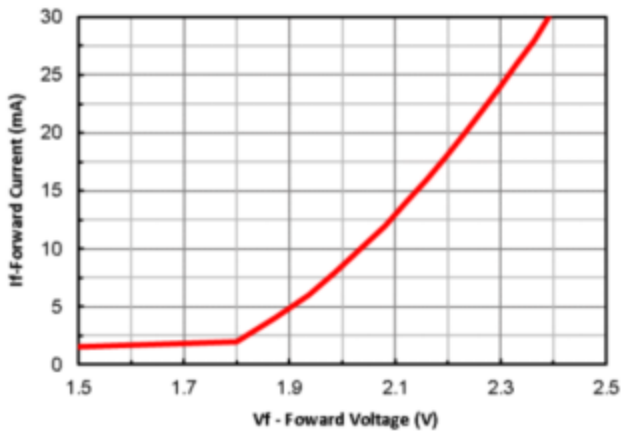
Parameter	Symbol	Condition	Min.	Typ.	Max.	Unit
Forward Current (DC)	IF				30	mA
Momentary Current	IFSM	1/10 Duty Ratio @1kHz			100	mA
Reverse voltage	VR				5	V
Operating Temperature	T_A		-40		+85	°C
Storage Temperature	T_S		-40		+85	°C
Soldering Temperature	T_{PK}	$t \leq 10s$			280	°C

Photoelectric characteristic parameter

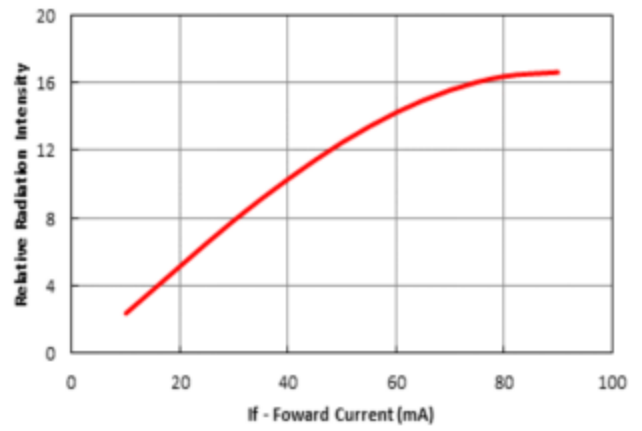
Parameter	Symbol	Condition	Min.	Typ.	Max.	Unit.
Junction voltage	VF		1.9		2.3	V
Transmitted power	P_O	Normal Temperature, 20mA		2		mW
Optical diameter	φ	Initial Spot		4.6		mm
Optical Center Wavelength	λ_P		650		660	nm
Full-angle Light Emission	2φ	Half Width (FWHM)		4.6		

Chart

I-V Curve (Forward voltage and current)



L-I Curve (Forward current and radiated power)



WLP-I Curve (Forward current and peak wavelength)

