

L2262

Rev 00

Features

- 1、 TO46 Encapsulation
- 2、 650nm Wavelength
- 3、 Good Parallelism, Initial Spot 7-9°
- 4、 Light Homogeneity
- 5、 -40°C—+85°C Operating Temperature

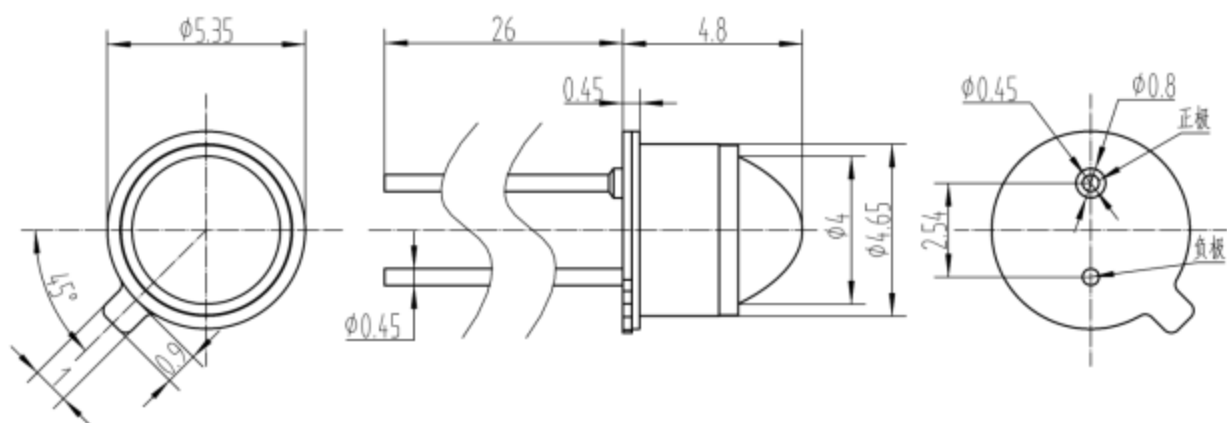
Application

- Applied to Photodetector 1005、 1011、 1014
- Used with Absolute Encoder
- Applied to Position-sensing Photosensitive Light Sources

Encapsulation Mode



Main dimensions (mm)



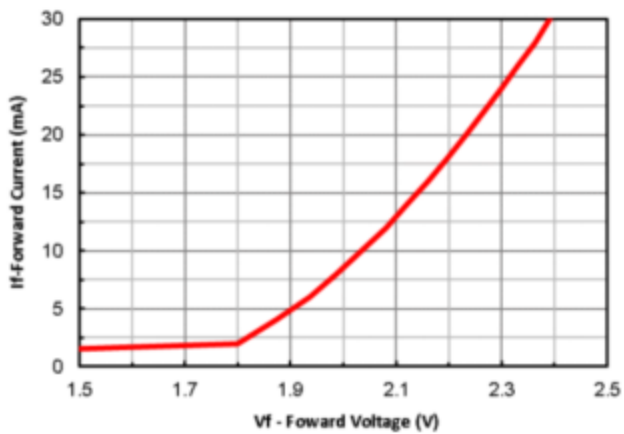
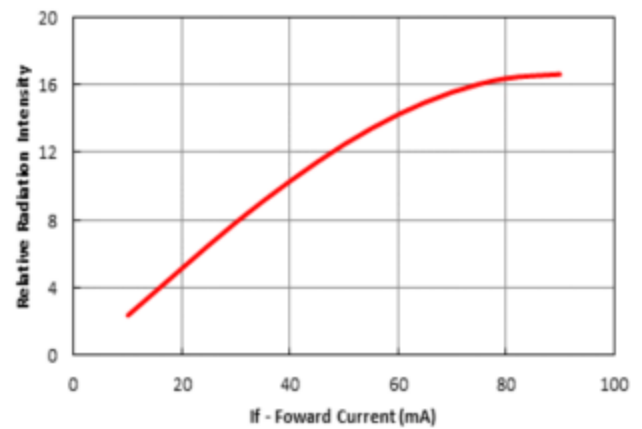
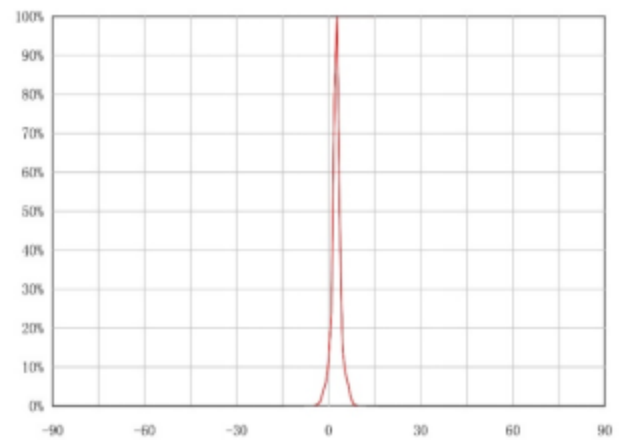
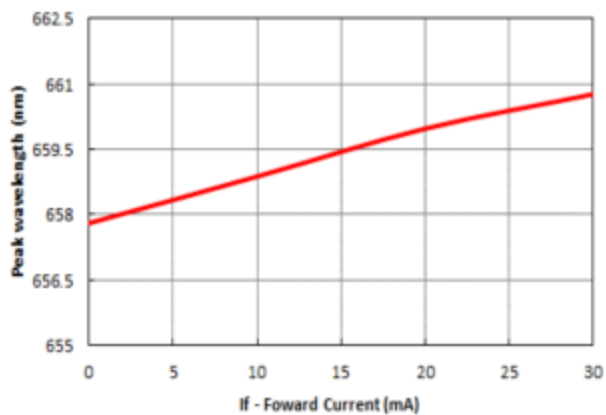
Absolute Rating

Damage may occur if the operating environment is exceeded in the table below (Note: Test condition is 25°C)

Parameter	Symbol	Condition	Min.	Typ.	Max.	Unit
Forward Current (DC)	IF				30	mA
Momentary Current	IFSM	1/10 Duty Ratio @1kHz			100	mA
Reverse voltage	VR				5	V
Operating Temperature	T_A		-40		+85	°C
Storage Temperature	T_S		-40		+85	°C
Soldering Temperature	T_{PK}	$t \leq 10s$			280	°C

Photoelectric characteristic parameter

Parameter	Symbol	Condition	Min.	Typ.	Max.	Unit
Junction voltage	VF		1.9		2.3	V
Transmitted power	P_O	Normal Temperature, 20mA		2		mW
Optical diameter	φ	Initial Spot		7.5		mm
Optical Center Wavelength	λ_P		650		660	nm
Full-angle Light Emission	2φ	Half Width (FWHM)		2.1		

Chart
I-V Curve (Forward voltage and current)

L-I Curve (Forward current and radiated power)

WLP-I Curve (Forward current and peak wavelength)


luminous intensity distribution curve